



2020 Innovation Pillar Award Winner

**Nourishing Our Neighbors, Mobile Food Pantry
(JFCS Greater Mercer County)**

July 15, 2020



Nourishing Our Neighbors **JFCS Mobile Food Pantry**



***Jewish Family & Children's Service
of Greater Mercer County
(Princeton, NJ)
Est. 1937***





The original "pantry"

JFCS Yvette Sarah Clayman Kosher Food Pantry, Est. 1998



NJHSA Pillar Innovation Award Winner: Mobile Food Pantry



What Sets Our Pantry Apart



Choice Pantry



Fresh & Frozen
Produce, Dairy & Meats



all Kosher products AND
gluten-free, dairy-free & more!



Shop by private appointment

NUTRITION



Kosher Meals on Wheels

5 meals / week

*Increased now up to 14/week
with emergency grant*



Healthy@Home

Monthly delivery of fresh groceries



Shabbat on Wheels

*Once / month delivery of
traditional Shabbat meal*

DELIVERED



Why a Mobile Food Pantry?

Why a Mobile Food Pantry?



Why a Mobile Food Pantry?



Why a Mobile Food Pantry?



40,000 food insecure
individuals in
Mercer County
(11% of population)



Limited Public
Transportation



Growing Population
of Older Adults



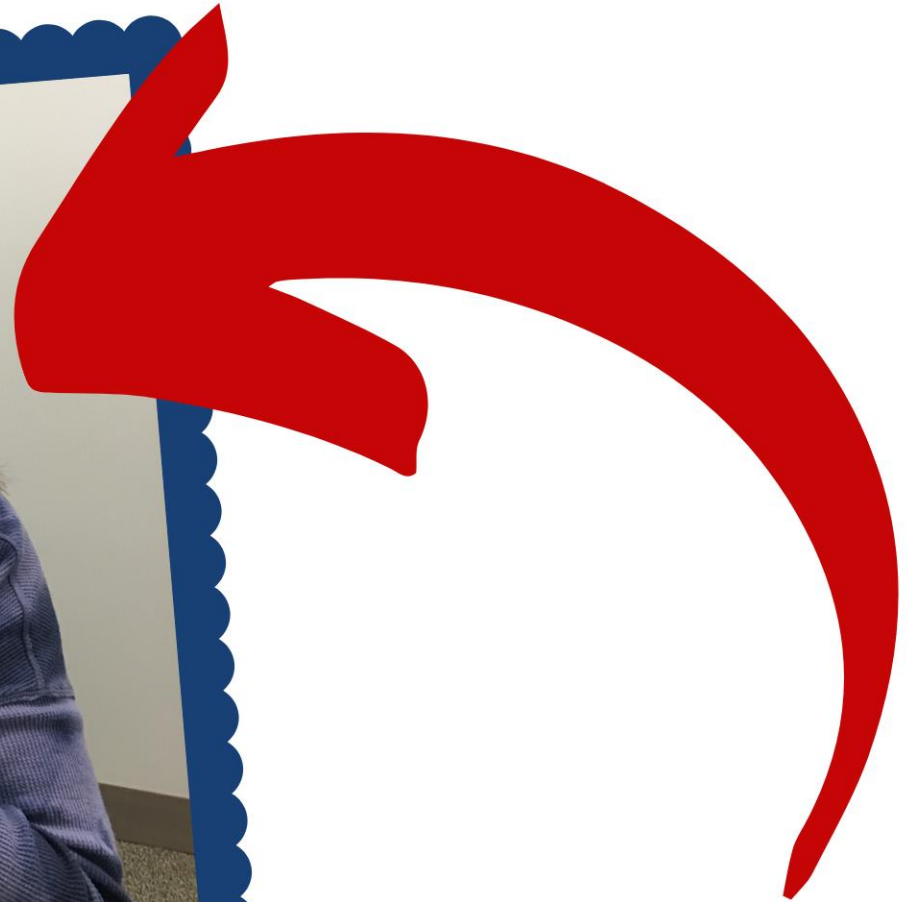
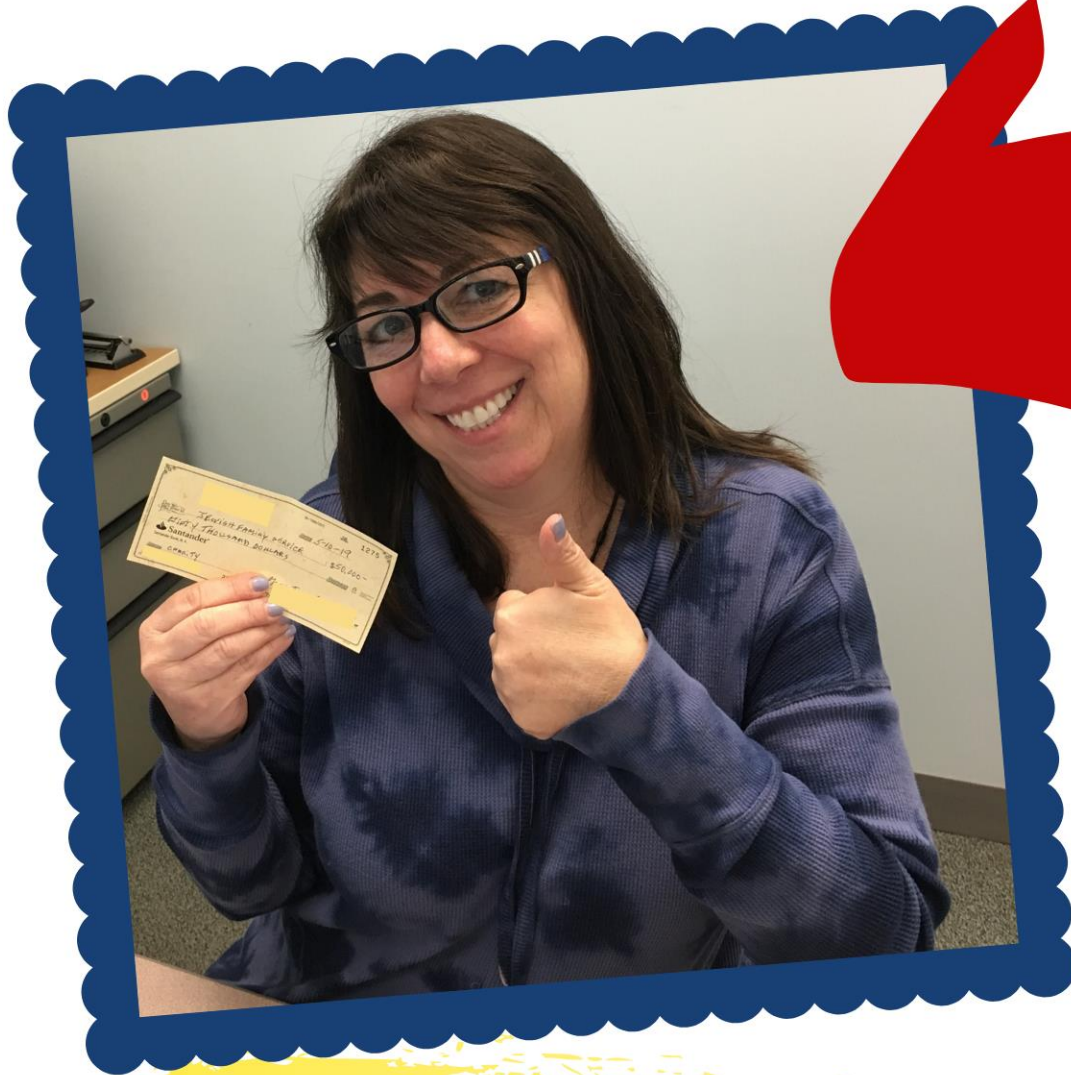
THE IDEA!



Testing the Waters: Pop-Up Pantries



Ready, Set, Go!



**First sponsor check
received**

The Details...

Gas prices?

Cost of truck?



Hire driver?

Vehicle insurance?

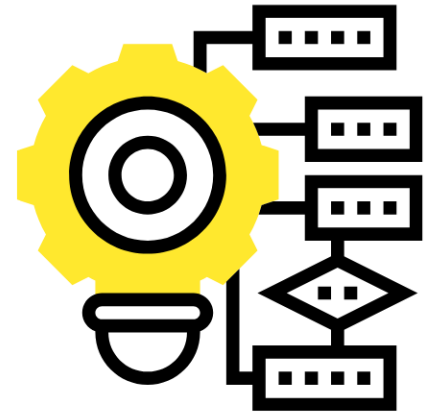
Truck interior & exterior design?

Permits? License?

Electric outlet for generator?



The Planning



How to replicate brick and mortar experience?

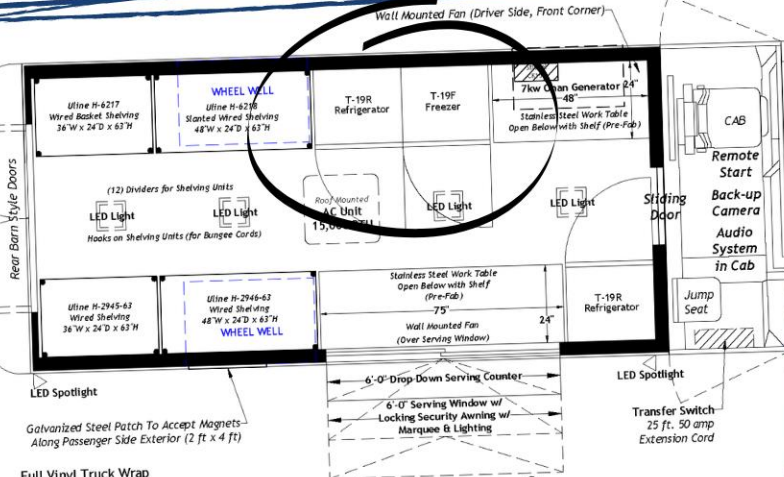


How many people to serve each stop?

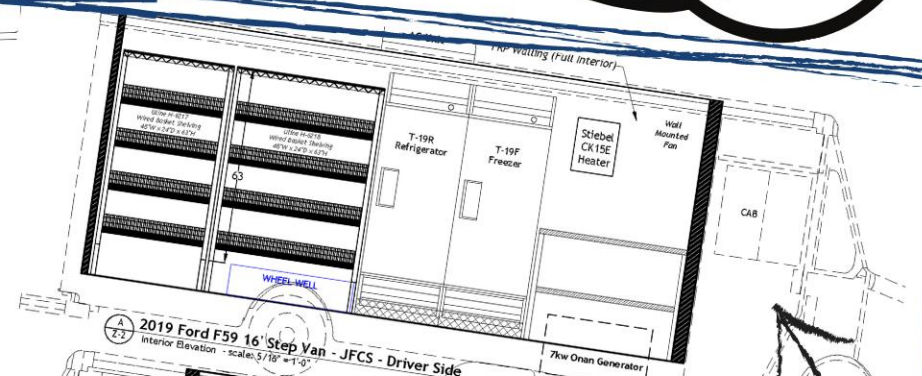


What type of truck?

The Planning



2019 Ford F59 16' Step Van - JFCS
Floor Plan - scale: 3/8" = 1'-0"



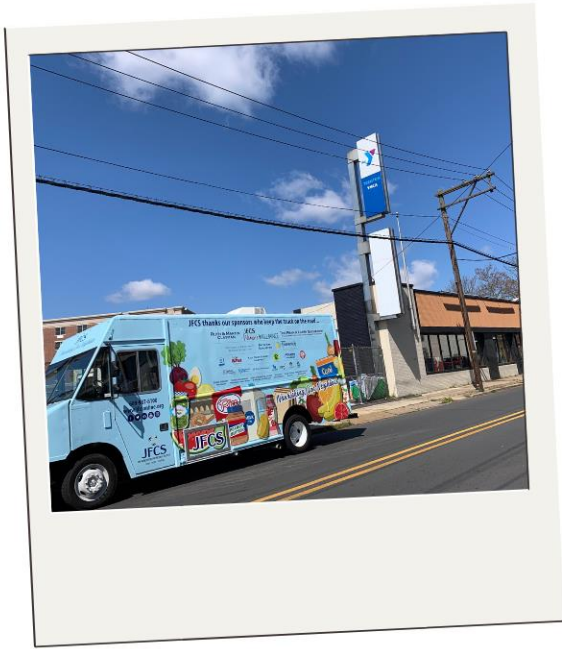
2019 Ford F59 16' Step Van - JFCS - Driver Side
Interior Elevation - scale: 5/16" = 1'-0"



2019 Ford F59 16' Step Van - JFCS - Passenger Side
Interior Elevation - scale: 3/8" = 1'-0"



Our sites



After-School Tutoring Center
Churches
Daycare/Nursery School
Housing Complex for Adults with Disabilities
Low-Income Housing Community
Local Schools (for Title I Students)
Senior Housing



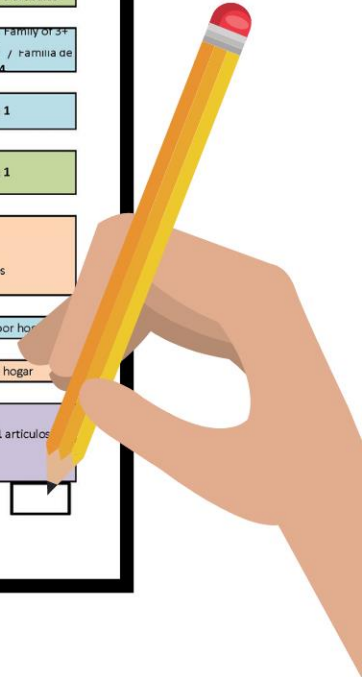
The Process for Patrons

JFCS MOBILE FOOD PANTRY SHOPPING LIST			
ALL ITEMS ARE SUBJECT TO AVAILABILITY AND MAY BE SUBSTITUTED FOR ANOTHER ITEM			
TODOS LOS ARTÍCULOS ESTÁN SUJETOS A DISPONIBILIDAD Y PUEDEN SER SUSTITUIDOS POR OTRO ARTÍCULO			
#	Food / Comida	Place an X for	How many you may select / Cuantos puedes seleccionar
1	Cheerios / Cheerios		Select 1 breakfast food Seleccione 1 comida de desayuno
2	Life Cereal / Cereal de la Vida		
3	Raisin Date Pecan Cereal / Cereal Granos Fecha de Pasas		
4	Cranberry Almond Cereal / Granos Almendra Arándano		
5	Instant Oatmeal, Flavored / Avena Instantánea, Con Sabor		
6	Instant Oatmeal, Plain / Avena Instantánea, Normal		
7	Oatmeal Canister / Frasco De Avena		
8	Pancake Mix / Mezcla Para Panqueques		
9	Spaghetti / Espaguetis		Family of 1-2 people selects 2 items Familia de 1-2 gente seleccione 2 articulos
10	Ziti / Ziti		
11	Rotini / Rotini		
12	White Rice / Arroz Blanco		
13	Brown Rice / Arroz Integral		Familia de 3+ seleccione 3 articulos
14	Apples / Manzana		Select 3 items Seleccione 3 articulos
15	Bananas / Bananas		
16	Applesauce / Applesauce		
17	Raisins / Pasas		
18	Peaches, No Sugar Added / Duraznos, Sin Azucar		
19	Peanut Butter, Chunky / Mantequilla de Mani, Grueso		Family of 1-2 people selects 3 items Familia de 1-2 gente seleccione 3 articulos
20	Peanut Butter, Creamy / Mantequilla de Mani, Cremosa		
21	Pinto Beans / Frijoles Pintos		
22	Black Beans / Frijoles		
23	Kidney Beans / Frijoles Habichuelas		
24	Chickpeas / Garbanzos		
25	Black Eye Beans / Frijoles Ojo Negros		Familia de 3+ seleccione 4 articulos
25	Tuna / Tuna		
26	Cucumbers / Pepinos		Family of 1-2 people selects 3 items Familia de 3+ selects 5 items
27	Green Bell Peppers / Verde Pimientos		
28	Potatoes / Papas		

Over for more / para más selecciones

29	Onions / Cebollas		Familia de 1-2 gente seleccione 3 articulos
30	Bag of Baby Carrots / Bolsa de bebe Zanahorias		Familia de 3+ gente seleccione 5 articulos
31	Yogurt, Fruit / Yogurt, Fruita		Family of 1-2 people selects 2 / Familia de 3+ people selects 4
32	Yogurt, Plain / Yogurt, Natural		Familia de 1-2 gente seleccione 2 / Familia de 3+ gente seleccione 4
33	Cheese, Cheddar / Queso, Cheddar		Select 1 / Seleccione 1
34	Cheese, Mozzarella / Queso, Mozzarella		
35	Frozen Carrots / Zanahorias Congeladas		Select 1 / Seleccione 1
36	Frozen String Beans / Ejotes Congeladas		
37	Frozen Fish Sticks / Palitos de Pescado Congelado		Select 1 items Seleccione 1 articulos
38	Frozen Grilled Salmon / Filete de Salmon		
39	Frozen Grilled Tilapia / Filete de Tilapia		
40	Chicken Breasts / Pechugas de Pollo		
41	Almond Milk / Leche de Almendra		1 per household / 1 leche por hogar
42	Eggs / Huevos		1 per household / 1 por hogar
43	Jam / Mermelada		Select 1 items / Seleccione 1 articulos
44	Tomato Juice / Jugo de Tomato		
45	Pasta Sauce / Salsa Para Pasta		

Please bring your reusable bags next time!
Asegurese de traer su bolsa reutilizable para la proxima vez!



The Challenges



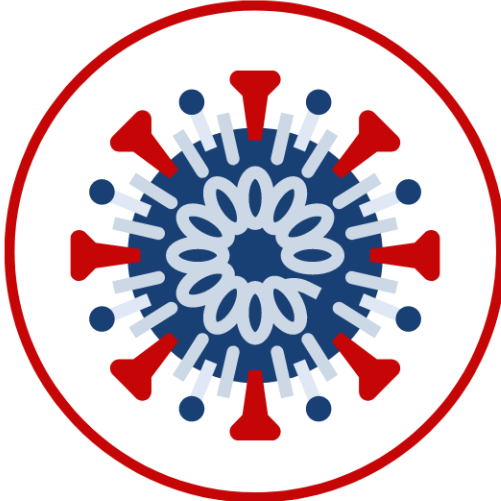
Finding a driver



Regulating truck temperature



No Bathroom



Global Pandemic

The Sponsors



Sponsorship Opportunities



JFCS Mobile Food Pantry

Sustaining Sponsor Opportunities

	\$50,000	\$25,000	\$15,000	\$10,000	\$5,000
IMPACT					
	Fill truck with food for 20 distribution sites	Fill truck with food for 10 distribution sites	Fill truck with food for 6 distribution sites	Fill truck with food for 4 distribution sites	Fill truck with food for 2 distribution sites
	Food for 1,000 family visits to mobile food pantry	Food for 500 family visits to mobile food pantry	Food for 300 family visits to mobile food pantry	Food for 200 family visits to mobile food pantry	Food for 100 family visits to mobile food pantry
RECOGNITION					
Logo*	Logo prominently displayed on driver side	Logo prominently displayed on driver side	Logo on driver side	Logo on driver side	Logo on driver side
Distribution Site Sponsor	8 times - recognition on passenger side of truck	5 times - recognition on passenger side of truck	3 times - recognition on passenger side of truck	2 times - recognition on passenger side of truck	
Food Donation Drive Sponsor	4 times	3 times	2 times	1 time	
Listing on JFCS website	Yes; logo listed to sponsor's website	Yes; logo listed to sponsor's website	Yes; logo listed to sponsor's website	Yes	Yes
Social Media Recognition	6 posts	4 posts	2 posts	1 post	1 post
Annual Report Listing	Yes	Yes	Yes	Yes	Yes
Employee Volunteer Opportunity	Yes	Yes	Yes	Yes	Yes
Listing on volunteer t-shirts	Yes	Yes	Yes	Yes	Yes
Inclusion in press release	Yes	Yes	Yes	Yes	Yes

**Founding Sponsors' logos/names are permanently displayed on passenger side of truck. Founding sponsors who renew, logos will also be displayed on driver side of truck.*



NJHSA Pillar Innovation Award Winner: Mobile Food Pantry

The Fundraising

\$345,000 raised from founding sponsors

➔ **\$230K from individual donors**

➔ **Initial \$100K from two couples funded the truck purchase**



Sponsor Breakdown

24 Listed Founding Sponsors

- 13 corporate or foundations
- 1 in-kind sponsor
- 9 Individuals/Couples/Families
- AND Women's Alliance



4 were NEW relationships including our property management company & introduction made through local Chamber of Commerce



Corporate Engagement

4 of the our corporate sponsors have participated in "Shop & Stock" events

6 additional local corporations have participated in events with hopes of becoming future Mobile Pantry sponsor

Additional opportunities exist for employees of corporate sponsors to volunteer at mobile food pantry distribution stops

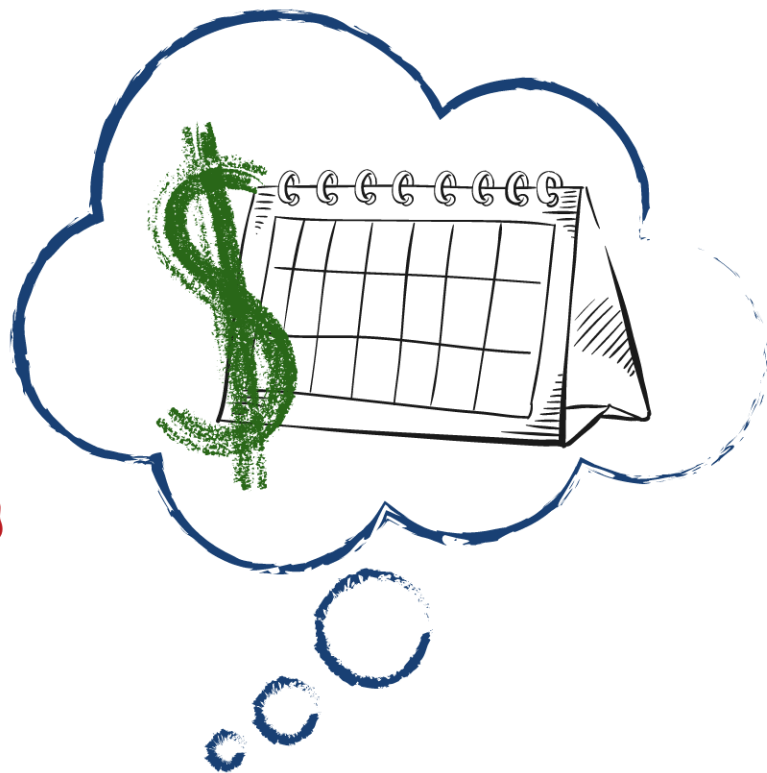
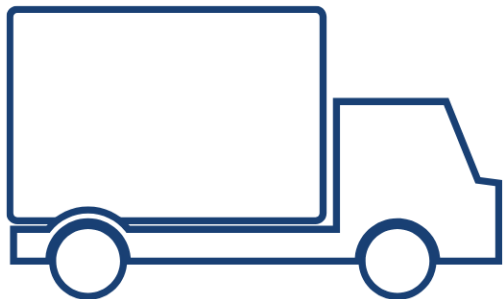


JFCS

Women's  ALLIANCE *Harnessing Positive Energy...*



JFCS Women's ALLIANCE *Harnessing Positive Energy...*



JFCS Women's ALLIANCE

The Women's Alliance raised  84,490

78 founding members contributed \$78,000

An additional 25 supporters donated \$6,490



JFCS Women's ALLIANCE *The Journey...*

Adapting for Year Two During a Pandemic

- Reviewing membership minimum
- Virtual event format & determining invite list
- Recognition of donors

Launch Party





Q & A





Upcoming Offerings



July 21 @ 4 p.m. EDT
When Sheltering in Place is Not Safe: The Impact of COVID-19 on Domestic Violence Victims

July 23 @ 1 p.m. EDT
Yedidut Toronto: Headway - The 3-in-1 model for Poverty Alleviation



July 22 @ 1 p.m. EDT
2020 Virtual Plenary - A Call to Action: Strategies for Jewish Human Service Agencies to Support and Strengthen Refugees and Asylum Seekers

Registration links can be found in our newsletters or on our website: <https://www.networkjhsa.org/>.