

jfs



™

Jewish Family Services
of GREATER KANSAS CITY

2020
gratitude
REPORT

A Year of
Extraordinary
Caring



JFS supports and strengthens lives throughout Kansas City, providing essential human services for people facing challenges in everyday life or times of crisis — regardless of faith, age, culture or lifestyle.

A NOTE OF GRATITUDE

Dear Friends,

As we reflect upon the last year, we are more grateful than ever for the opportunity to have helped more than 10,000 people in need from our community. We couldn't have responded without your amazing support and generosity. Thank you!

JFS never missed a step in serving our community. We didn't stop, and in fact, grew our services and organization significantly in the past year including doubling Food Pantry clients and mental health sessions. JFS launched innovative programs such as our TechConnect pilot for isolated older adults and developed protocols to keep all our in-person programs safe for our clients, staff and volunteers. Check out the rest of this report to see the impact we all made together.

As a small thank you for your continued trust, we have enclosed a postcard featuring the artwork of our good friend Rita Blitt titled "Caring." We hope you will send this postcard to someone who could use an extra touch to remind them they are valued or to recognize someone for their caring gestures that lifted up the community last year. One lesson from a year living with COVID is to remember and recognize the people in our lives who matter most.

Thank you again for joining JFS in helping to strengthen the lives of Kansas Citians. Thank you for caring.

With gratitude,



Don Goldman
EXECUTIVE DIRECTOR & CEO



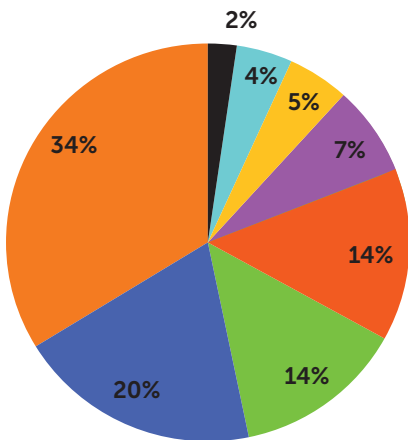
Kelly Somberg
BOARD PRESIDENT

TOGETHER, WE MADE A DIFFERENCE

We will always remember how our staff, volunteers, donors, and community partners stepped up with courage, grace, and generosity to help people most impacted by the COVID-19 pandemic.

We are using the challenges of 2020 to become wiser, more resilient, and better prepared to support individuals and families struggling with persistent economic and mental challenges.

For a list of donors who trusted and invested in our work, visit www.jfskc.org.



2020 FUNDING \$6.8 MILLION

■ Program Service Fees	\$160,700
■ Investment Income	\$304,200
■ Emergency Assistance Grants	\$347,300
■ Government	\$497,000
■ In-kind Pantry Donations	\$942,000
■ Philanthropic Giving	\$967,000
■ Covid-19 Funding	\$1,339,700
■ Grants	\$2,331,000

\$6,888,900

OUR IMPACT

**2020: A YEAR OF
EXTRAORDINARY RESPONSE**

10,000+ people were helped

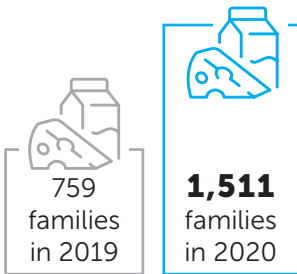


KesherKC

CONNECTIONS TO FOOD AND A MORE SECURE FUTURE

FOOD PANTRY


99%
INCREASE
IN FAMILIES
HELPED





+  **1,709** people received food
at community events

 **1 IN 3** families
received pet food

SOCIAL WORK


122%
INCREASE
OVER 2019

 **872** clients
received social
work support

 **72%** of clients
enrolled in two or
more programs

745 people received
financial aid



\$878,374 financial aid
distributed

VOLUNTEERS

324
volunteers
contributed
6,597 hours



Equal to
\$179,449
staffing
value

NAVIGATOR CARE NAVIGATION LINE



2,567 calls
for assistance

MENTAL HEALTH & EDUCATION



50%
INCREASE



4,247
counseling sessions

369 clients served 



16 schools participated in YouBeYou
(Teen Mental Health Program)

485 students and teachers trained
as mental health advocates



3,280 participants in Family
Life Education/ CHAI programs

OLDER ADULT



55%
INCREASE



424 Care
Management clients

177
Help@Home
members



1,964
Help@Home
visits

212
Jet Express riders



3,275
Jet Express rides



308 Calling
Connections clients

101
people received
Medicare
counseling



\$2,805 Average
Medicare savings per
person counseled
TOTAL SAVED
\$790,409

JEWISH LIFE

512 people
received
Chaplaincy and
Spiritual Care



1,964 visits



4 babies born
to families assisted
by Priya



160 families
received Passover
and High Holiday
food



357 Hannukah
Project recipients





INSIDE: A special thank
you for caring.

Jewish Family Services of Greater Kansas City was
founded on the Jewish value of *Tikkun Olam*, repairing
the world, one person, one family at a time.
Together, we are making a difference.



JFS at the J
5801 W. 115th Street Suite 103
Overland Park, KS 66211





JFS at the J
5801 W. 115th Street Suite 103
Overland Park, KS 66211

HELP SPREAD HOPE

in Our Community



Extraordinary
NEEDS
Extraordinary
RESPONSE
Extraordinary
CARING

A NOTE OF GRATITUDE

Dear

We are thankful for you! Thankful for the many ways you stepped up last year to help JFS make our community stronger in a time of unprecedented need. Because of your financial contributions, in-kind donations to our community food pantries, and volunteer hours served, JFS was able to help more than 10,000 individuals — more people than ever before.

The numbers, statistics, and stories in our 2020 Gratitude Report aimed to show how our clients were served and where assistance dramatically rose. We hope you also saw the impact we had on our community — proof that when we band together, we can accomplish so much more, even in times of extreme challenges. And while we are seeing signs of improvement, challenges not only persist, but continue to grow for so many people.

Whether it's the ongoing push to provide vital provisions to families facing food shortages or the significant uptick in clients seeking mental health resources, JFS knows we can continue to meet the demands because we are part of a compassionate community helping to care for people who are struggling.

This continues to be an urgent time for so many people in our community, and we have a timely request — will you please consider making a donation so we can strengthen the safety net we are providing to our clients and each new person coming to us for help? Your donation will provide hope to people striving to turn the corner and the necessary resources to assist them.

Your support matters to vulnerable JFS clients, dedicated staff, and devoted volunteers. Thank you for continuing to step up and most of all — thank you for caring.

With gratitude,



Don Goldman
EXECUTIVE DIRECTOR & CEO

KesherKC

SOCIAL WORK



122% INCREASE



872 clients in 2020
393 clients 2019

FOOD PANTRY



99% INCREASE



1,511 families in 2020
759 families in 2019

MENTAL HEALTH & EDUCATION



50% INCREASE

4,247 counseling sessions in 2020
2,824 counseling sessions in 2019



OLDER ADULT



55% INCREASE

424 Care Management clients in 2020
274 Care Management clients in 2019



Yes, **COUNT ON ME TO
SPREAD HOPE IN
OUR COMMUNITY**

Please accept my donation of:

Enclosed is my check payable to: **Jewish Family Services**

Please charge my gift of \$_____ to my:

MasterCard

Visa

American Express

Discover

Please charge my card for a donation of \$_____ every month.

CARD NUMBER

EXP. DATE

CVV

CARDHOLDER'S NAME (PLEASE PRINT)

SIGNATURE

EMAIL ADDRESS

To make your gift, please complete this form and return in the enclosed envelope or give online at jfskc.org/donate



- Please send me information about including Jewish Family Services in my charitable estate plans.
- I have included Jewish Family Services in my estate plans.
- I would like to be contacted about volunteer opportunities.



Hope you enjoyed the Rita Blitt's "Caring" postcard sent to you in our 2020 Gratitude Report. We love hearing stories! May we contact you to learn how you shared it?

Yes, I can be reached at:

PHONE

EMAIL