



JEWISH
FAMILY SERVICE
OF GREATER NEW HAVEN

(203) 389-5599

1440 Whalley Avenue New Haven, CT 06515

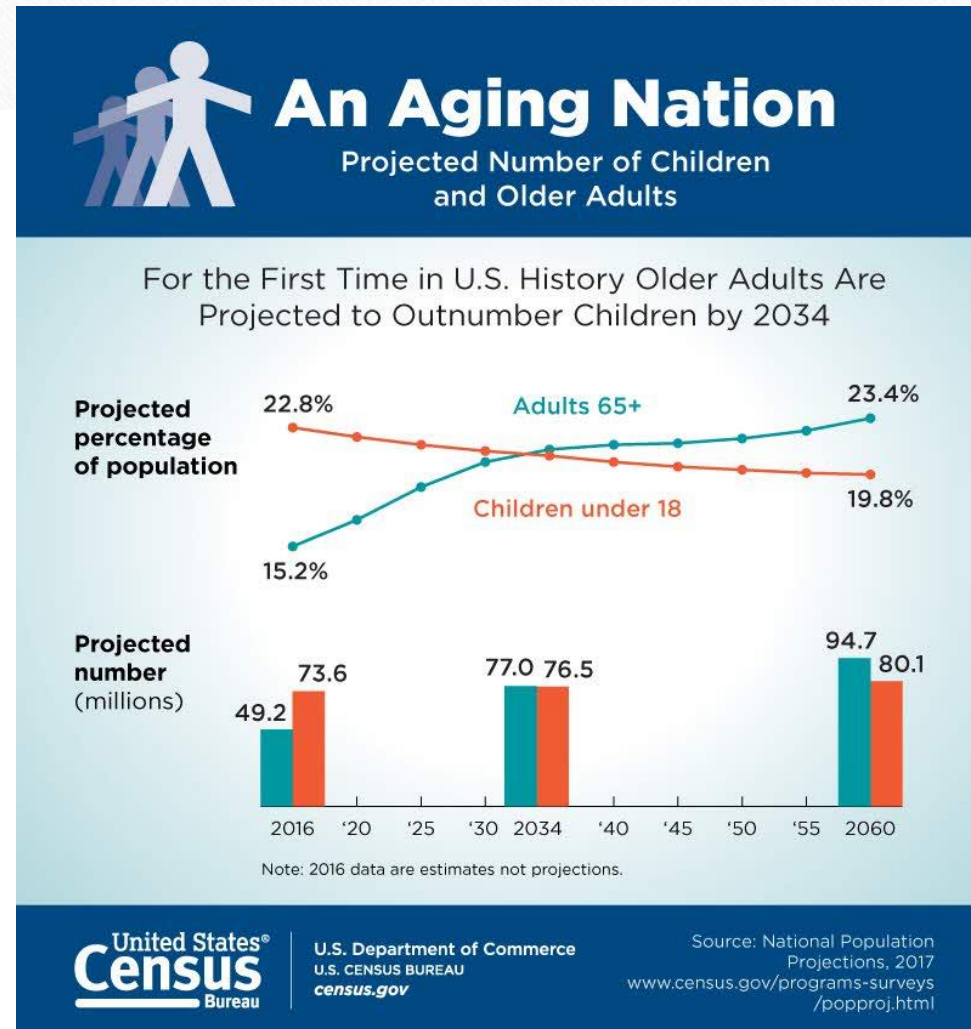
Care Navigators

an Aging Life Care Program

Is your agency prepared for the aging population?

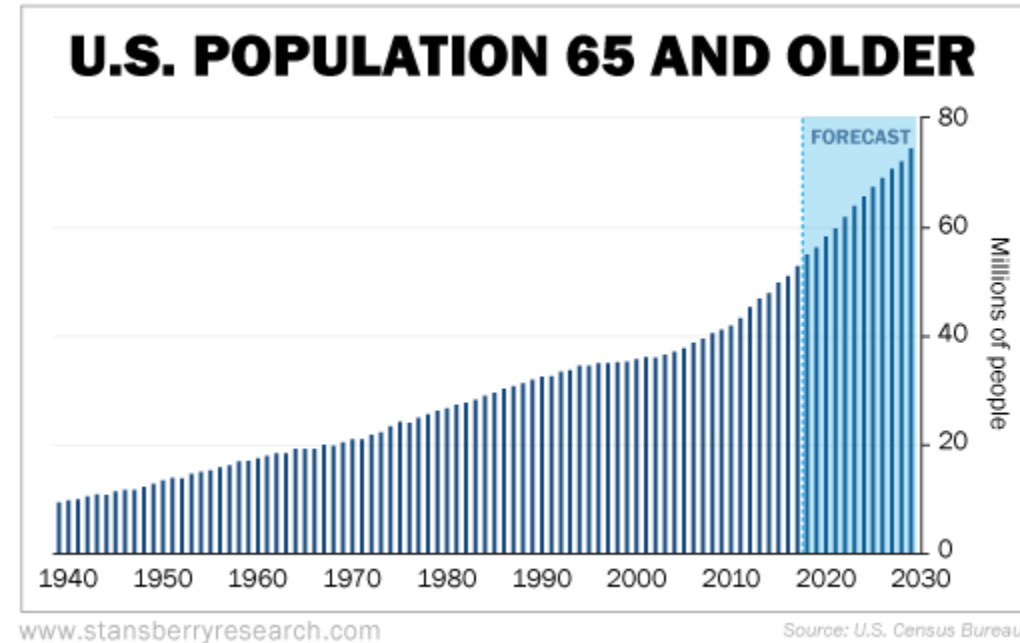
Whether or not your agency currently has a program focused on aging, very shortly your clientele will be made up of older adults.

Is your agency ready?



Misunderstanding the Boomer Population can be a problem:

Older Adults will outnumber every cohort including children, and make up more than 50% of the gross population. The US Census cites 1 in 5 people will be older adults by the year 2030 as Baby Boomers reach late-stage seniority.



Boomers did it all themselves!

Will they accept “care” as it has been provided?

Fear

- Baby Boomers like to succeed! Provide them with developmental opportunities to be involved in their own aging at your organization. Information is the antidote to fear of the unknown.

Bias

- Baby Boomers are youthful and put a great emphasis on self-care and wellbeing. It is our job to support the undoing of the aging bias so Boomers can find joy at every level of physical and mental functioning.



They are caring for their
own parents as they age!

As well as being involved in careers, their own kids, grandkids...

what is preventing these folks for reaching out?

Magical Thinking

What constitutes Magical Thinking in the realm of aging?

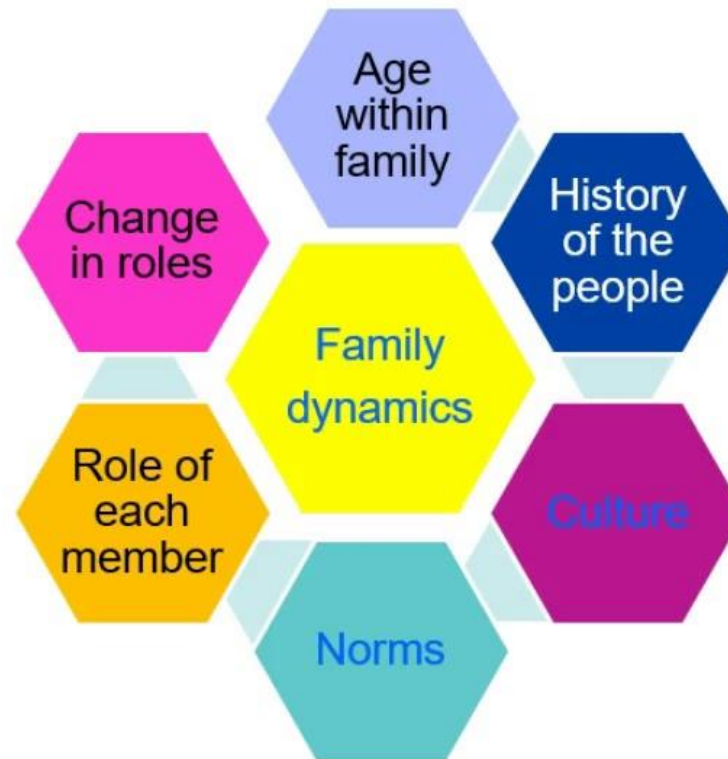
Believing that one's thoughts, actions or words are preventative measures.

Care Navigators will engage your **critical thinking** and **planning** skill set.



Life is in the present tense. Your choices and empowerment affect the NOW and the FUTURE.

Influences on Family Dynamics



JFS / Social Service are for those in Need

Easier to be the givers



Not the receivers



You Are A Care Navigator

We must re-empowering Boomers to use their advocacy skills for their own aging! And by using a social service agency, keep the resources in the community and in aging!

Dementia and Alzheimer's

According to Alz.org more than **6 million** Americans of all ages have Alzheimer's.

An estimated 6.5 million Americans age 65 and older are living with Alzheimer's in 2022.

Seventy-three percent are age 75 or older. About 1 in 9 age 65 and older (10.7%) has Alzheimer's.

Care Navigators helps everyone to plan ahead for all potential outcomes.

**IF WE DO NOT PLAN AHEAD
OUR OLDER ADULT
POPULATION WILL LIVE IN
MIDDLE-CLASS-AGING
POVERTY**

Older Adults & Poverty

New Haven Example

Jewish Family Service of Greater New Haven Care Navigators observed that the need for resources for older adults will only increase, and created a specific aging adult program to address these issues. 26.5% of the population in New Haven, CT live below the poverty line, a number that is higher than the national average of 12.3%.



Working class older adults live in poverty and need help planning or avoiding this outcome.

Many community members are simply low socioeconomic with the 2019 median household income around \$42,222.

These numbers are proof that most of the community is in need of geriatric service or geriatric case management at an affordable cost and could benefit from such a program.



What does poverty look like for Boomers?



Care Navigators an Aging Life Care Program

- Keep resources in the aging and Jewish communities
- Increase revenue for your non profit
- Avoid middle class aging poverty

ALCA
8
knowledge
areas



Elanit Linder, LMSW

Elanit Linder, LMSW
has 9+ years'
experience in older
adult social services,
Master's Degree from
Columbia School of
Social Work, and a 20+
year history in
program development.



Benefits to a non-profit ALCA: Case Mix

- When low-socioeconomic older adults are served it relieves pressures on our entire social service system
- When high income older adults keep their resources in aging, they are empowered as heroes in their own aging and everyone is helped
- By preparing for the upcoming aging population agencies will maintain their resources by not playing “catch up”
- Aging resources are proven income models for non-profits

Delivery of Services

- Comprehensive initial consultation
- Assessment
- Specialized dementia evaluations
- Planning and problem-solving
- Education, Referrals and Advocacy
- A liaison to healthcare professionals
- Family Support: short and long-distance
- Individualized Care Plan
- Care Coordination
- Programs specific to the individual older adults likes and needs

Aging Information?

Many licensed clinicians and healthcare professionals do not understand the intricacies of for-profit healthcare and aging

- Call JFS of Greater New Haven for support of your existing programs or budding ideas
- Join one of our Aging Mastery programs virtually
- Phone a friend at JFS of Greater New Haven if you run into an issue with an aging client
- Having one aging expert on your staff, or educating one expert can save your organization time and money

Program Development: Fee for Service

- Care Navigators, an Aging Life Care Program, is a fee for service program charged in 10 minute increments, or one CN Unit of Service, to those who can afford it
- Care Navigators reviews all cases regardless of socioeconomic or ability to pay
- The CN Units increase affordability of Care Navigators and increase program flexibility by catering to individual's needs and helps with documentation of all cases
- Care Navigators finds that many clients and client's families receive all of the information that they need in the initial 1-hour assessment.
- Through research, cost comparison and further review this is the model that works for nonprofits nation wide.

Referrals

- Mental Health Clinical Therapy at JFS
- Food Pantry at JFS
- SOS at JFS
- Holocaust Survivors at JFS
- Trusted Home Care Agencies
- Trusted Skilled Nursing partners
- Trusted Housing / Low Income Senior Housing
- Vetted Transportation Services
- Moving, Downsizing and Decluttering



Aging Costs

- According to Julie Wagner, CEO of ALCA initial assessments can vary widely from about \$800 to \$2,000. Hourly rates for ongoing services range from \$90 to \$250.”
- Assisted Living costs range between \$4,000 and \$12,000 a month
- Continuing Care Retirement Communities ... millions
- \$35 an hour for private homecare at 24 hours a day can add up
- With nursing homes closing... where will people find care?

Care Navigators is only \$216 an hour

Lets break down all of the things that we as a community spend \$216 on

- Unexpected costs pop up in our lives continuously and we simply take care of them
- What if one planning meeting set you and your family up for 10 or 20 minute follow ups to keep your life on track as you age? Charged at double chai or \$36 and \$72 respectively
- Let our Aging Life Care Team get to know you and support you along the journey

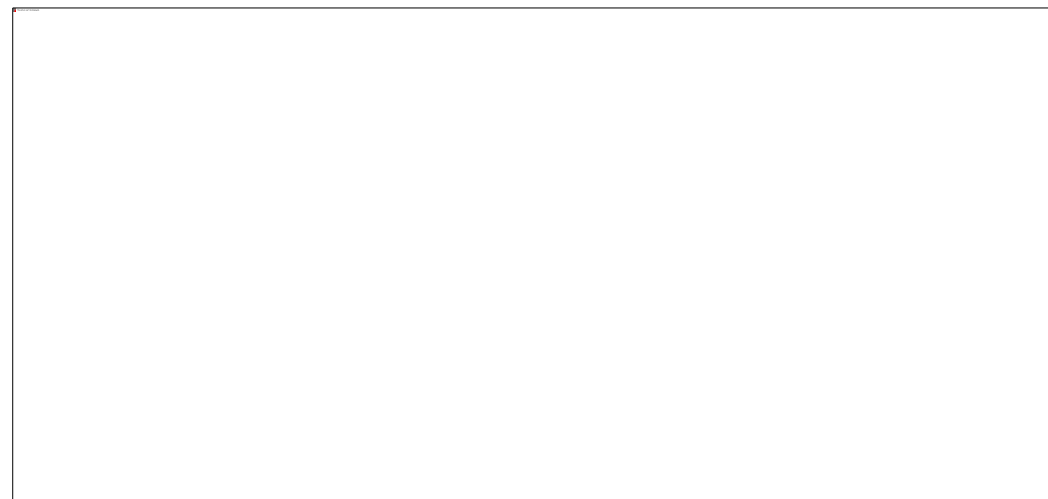
Tzadakah

- Most Jewish people will give away multiples of \$18 or Chai (meaning life) to non profit organizations or in memory of a friend, or when someone needs help
- \$36 or ten minutes with Care Navigators is the gift that keeps on giving

What do you spend \$216 on?

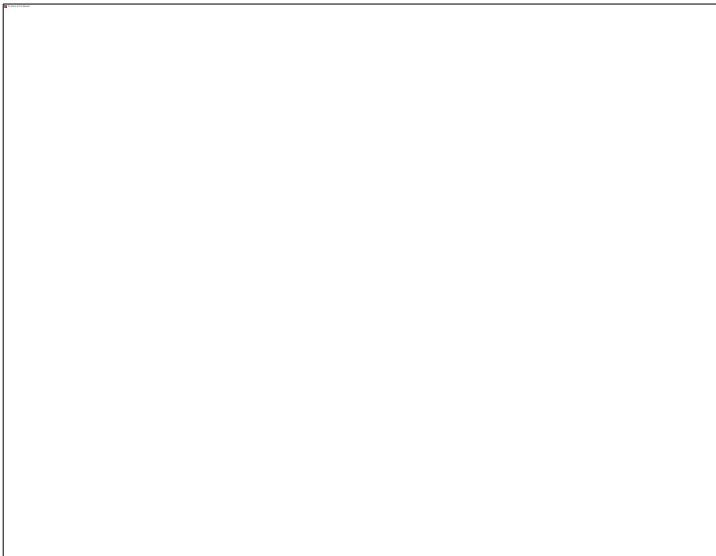
And isn't it worth the kind of self-care and preventative healthcare navigation that you and your family deserve?

You deserve good health & happiness!

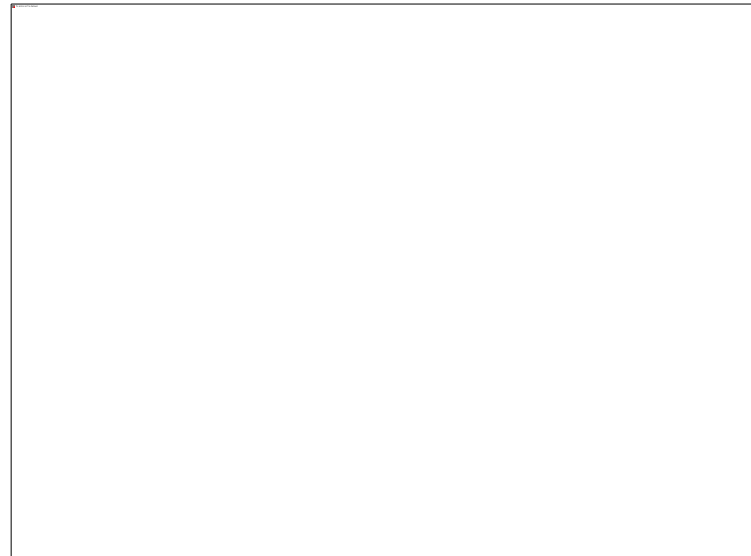


\$216

Hair Cut

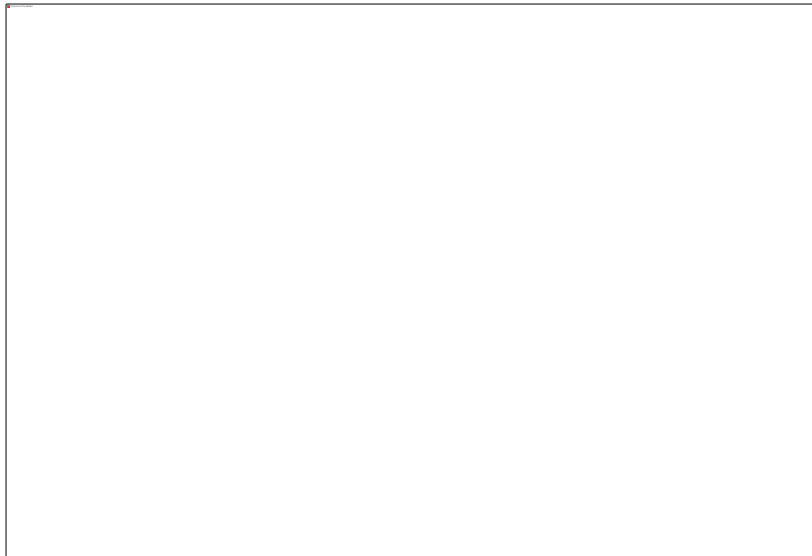


Electrician

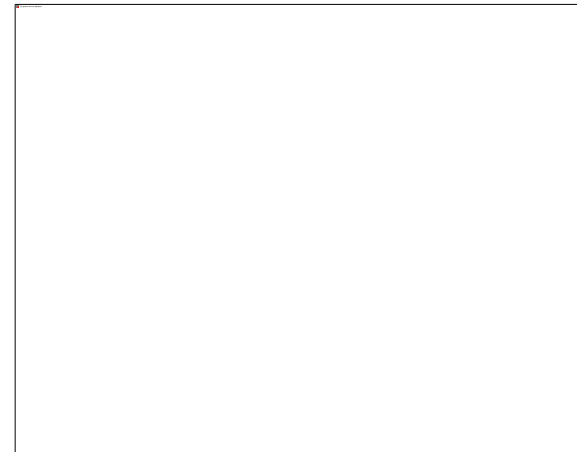


\$216

Move Managers



Elder Care Attorneys



\$216

Doctor Visit Copays & Meds

--

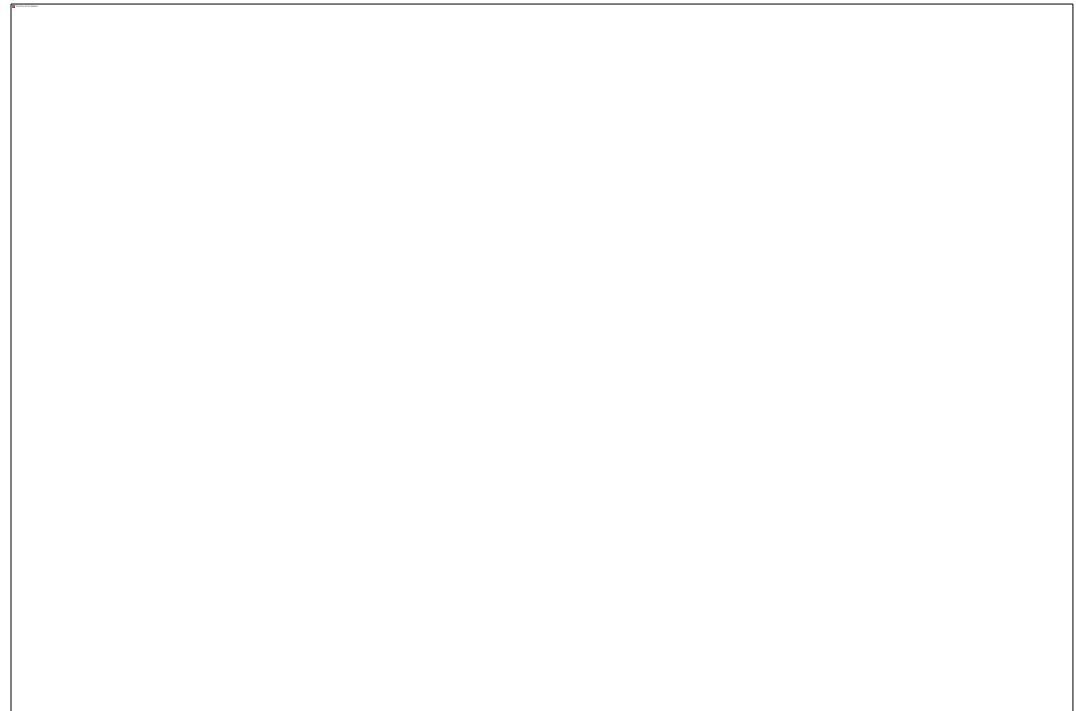
Dinner Out with Family

--

By Choosing Care Navigators

By choosing Care Navigators you are choosing to help the community by supporting JFS programs.

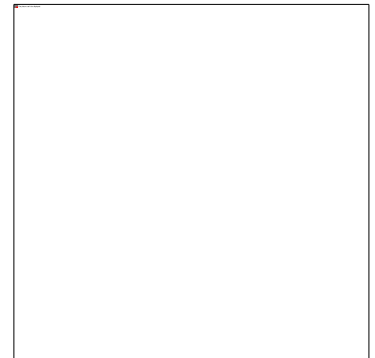
Your \$36 fee supports not only other Aging Adults but also our SOS program, Holocaust, Food Pantry and more.



By Choosing Care Navigators



You are role-modeling that we all need support at some point in our lives. And that our community supports the community through Jewish Family Service.



Schedule an appointment with an aging expert!

Elanit Linder, LMSW
Director of Aging Adult Services
Care Navigators
1440 Whalley Ave
New Haven, CT 06515
Office: (203) 389-5599 x113
Fax: (203) 389-5904
elinder@jfsnh.org

